

# 2024 RSJP EXP ACCOMMODATION GUIDE

## Tassel Inn Kyoto Kawaramachi Nijo

タッセルイン きょうとかわらまちにじょう 京都 河原町 二条

### ACCOMMODATION

Tassel Inn Kyoto Kawaramachi Nijo offers a comfortable and convenient environment for students as it is close to Ritsumeikan University and also to the center of Kyoto city. It is located in the Kawaramachi area and is located next to Kyoto City Hall as well as a few minutes walking distance to shopping areas. Its transportation convenience, supermarkets, and shops make it a comfortable place for you to stay during the program.

### CHECK-IN

- **Check-in time: Monday, July 22, 2024, 3pm~**
- **Please pay 65,600 JPY by credit card or cash when check-in** (includes tax/ for one person/single room/ for the whole program period).
- All students must arrive at the hotel on your own during business hours to check-in. Unfortunately, we do not arrange transportation from the airport to the hotel. It will take approximately 2 hours from Kansai International Airport. From Kyoto station, it will take about 20 minutes by train or bus.

### CHECK-OUT

- **Check out time: by Sat, August 03, 2024, ~11 am**
- **All students must check out by the following time.** Please note that we will throw away all the items left in the room.

### CANCELLATION POLICY

As a rule, you cannot cancel your booking, but in case you cannot join the program for some reasons you will be charged the below cancellation fee. If you do not pay it but have already paid the program fee, the hotel cancellation fee will be deducted from the program refund fee.

- 4 days before: none
- 3days before: 30%
- 2days before:30%
- 1day before: 50%
- The day of stay/no stay: 100%

# Tassel Inn Kyoto Kawaramachi Nijo

\*Subject to change

【General Information】	
Room Type	Single
Room Details	Single room 15 square meters Non-smoking, fully furnished
Room Fee (for whole stay)	¥65,600 (tax included)
Payment methods	Pay during check-in (Japanese Yen only) Cash or credit cards: VISA/JCB/MASTER/ AMERICAN EXPRESS/DINERS CLUB
【Room】	
Toilet/Wash Basin	1 toilet/1 wash basin
Baths/Showers	1 shower
Towels/Amenities	Bath towel, body towel, bath mat, shampoo, conditioner, body soap, hand soap, facial, toothbrush set, razor, hair brush, cotton swab set, facial care set
Refrigerator	1 refrigerator
Room facilities and equipment	1 bed, 1 desk, 1 chair, television, air conditioner, Nanoe generator, humidifier, refrigerator, hair dryer, slippers, electric kettle, tea bag, reading light, nightwear, deodorant spray
Bedding	Provided
A/C, Heating	Provided
Telephone	1 phone (connectable only within the hotel)
【Services】	
Microwave	1 communal microwave on 1 <sup>st</sup> floor
Laundry	1 communal coin washer/dryer
Café/Restaurant	Breakfast available (not included in room fee)
Bed Making/Cleaning	Cleaned every 3 days
In-room Internet Access	Free Wi-Fi
Rentable Amenities	Trouser presser, iron, ironing board, mobile charger
【Access】	
Transportation to Campus	30-minute bus ride
Transportation to Kyoto Station	10-minute subway ride

## CONTACT INFORMATION



### Study Abroad Center, Ritsumeikan University

Address: 56-1 Toji-in, Kitamachi, Kita-ku, Kyoto 603-8346

TEL: +81-75-466-3009 (from outside Japan)

FAX: +81-75-465-8112 (from outside Japan)

E-MAIL: [rsjprwjp@st.ritsumei.ac.jp](mailto:rsjprwjp@st.ritsumei.ac.jp)

### Important Points

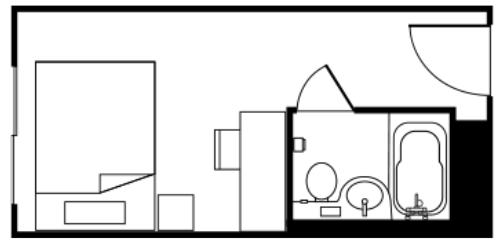
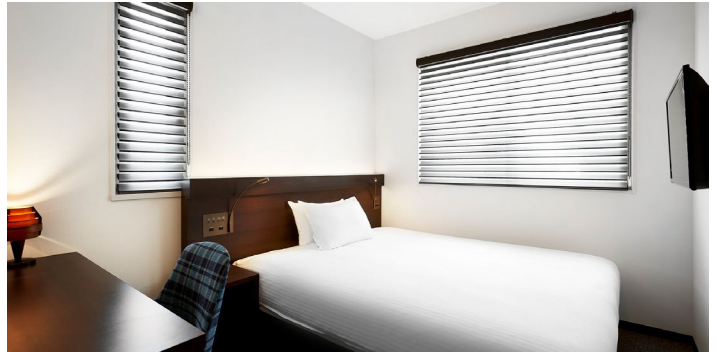
We kindly ask you to keep the following in mind when staying at this hotel.

- ◆ There are many other customers staying in the hotel. In order to avoid disturbances and help ensure a safe living environment for everyone, there are several rules in place such as not yelling out loud, making loud noises, and restrictions on the use of shared areas/items. No parties are allowed in each room.
- ◆ We do not allow guests including buddies, friends, and family members to visit your rooms nor stay overnight.
- ◆ Please keep the communal areas clear of personal belongings and garbage, and keep them clean and orderly.
- ◆ If there are any noticeable damages or stains found in your room after check-out, you will be asked to pay for those repair or cleaning that may be necessary.
- ◆ The hotel is unable to receive mail or parcels. In case of emergency, Ritsumeikan University Study Abroad Center will be able to receive them, but first please consult with one of the Study Abroad Center staffs in advance.
- ◆ Due to our regulation and safety reasons, you may not change your room with other participants. You are not also allowed to change your accommodation during the program period.
- ◆ In the case you are infected with COVID-19, you will be asked to follow instructions given by the Study Abroad Center.

# Tassel Inn Kyoto Kawaramachi Nijo

\*All pictures in this guide are for reference only. Actual rooms may vary slightly from the pictures.

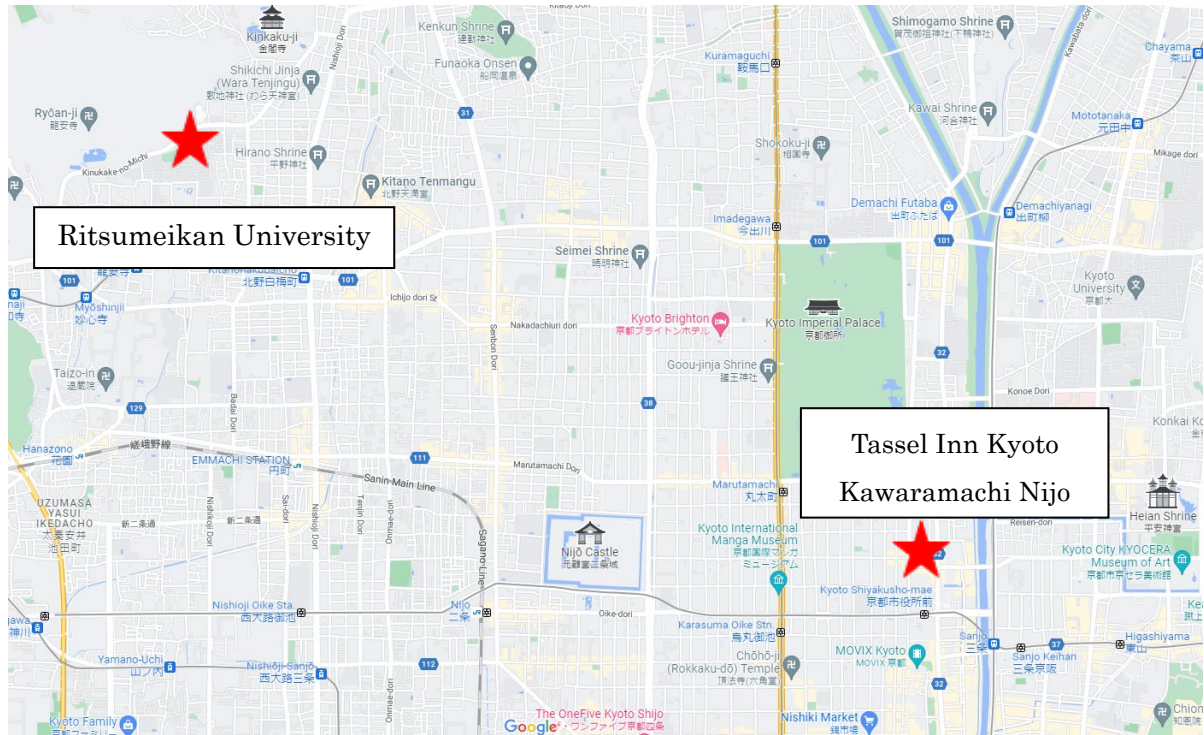
## Single Room



## Hotel Entrance/Interior



# Access to Tassel Inn Kyoto Kawaramachi Nijo



## Tassel Inn Kyoto Kawaramachi Nijo

■Website: <https://tasselhotel.jp/inn-kyoto-nijo/en/access.html>

■Address: 226 Suminokuracho, Shinsawaragicho-dori Nijo-agaru, Nakagyo-ku, Kyoto City, Kyoto 604-0913, Japan

■TEL: 075-256-2500

タッセルイン 京都 河原町 二条  
きょうとかわらまちにじょう

■ウェブサイト: <https://tasselhotel.jp/inn-kyoto-nijo/en/access.html>

■住所: 〒604-0913 京都市中京区新樫木町通二条上ル角倉町226  
じゅうしょ きょうと しなかがょうくしんさわらぎちょうどりにじょうあが すみのくらちょう

■TEL: 075-256-2500